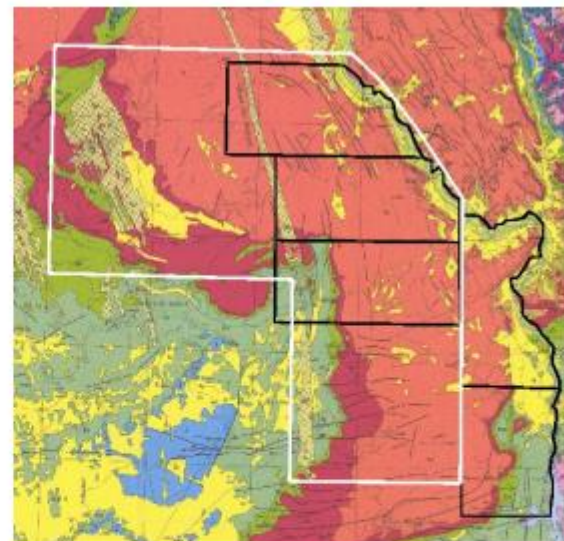
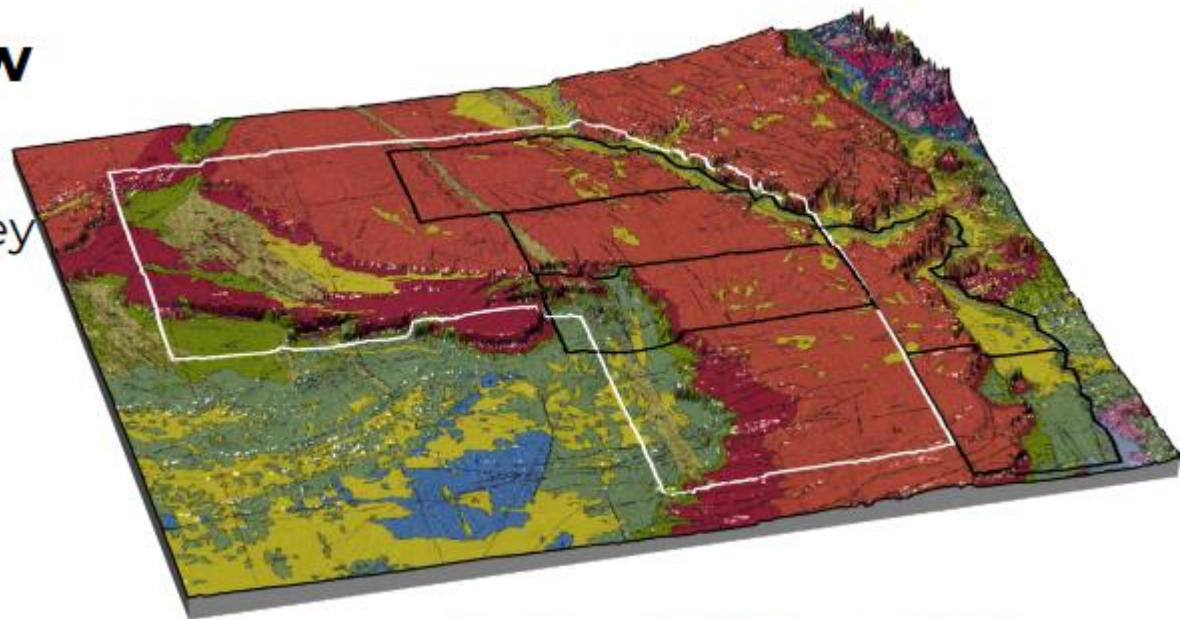


# Upper Egypt License Round

Horus – eFTG Data

## Geological overview

- Analysis of structural lineaments shows that the survey sits on triple junction of 3 tectonic regimes:
  - Mediterranean regime in the SW (E-W lineaments)
  - Red Sea regime in the NE (NW-SE lineaments)
  - Pan-African regime in the south (NE-SW lineaments)
- Adjacent Proven plays likely extend beneath the carbonates, but previously no image, first indication by eFTG, which also prepares for challenging seismic imaging beneath the platform
  - The Mesozoic play is proven (Kom-Ombo) to the east of the survey (stable shelf) with
    - proven reservoirs (Jurassic and Cretaceous sands),
    - a proven Cretaceous seal and source (marine shales),
    - and a proven Jurassic source (continental lacustrine early rift fill shales).
  - Further East the play only shows gas if it is not dry







Contact: Jevon Hilder

Senior Business Development Manager: Africa & Mediterranean

[Jevon.hilder@tgs.com](mailto:Jevon.hilder@tgs.com)

Contact: Prof. Ali Abdelaziz

CEO Arabian Geophysical - Metatek Group Ltd

[Ali.abdelaziz@metatek-group.com](mailto:Ali.abdelaziz@metatek-group.com)